

# Andrews University

Seek Knowledge. Affirm Faith. Change the World.



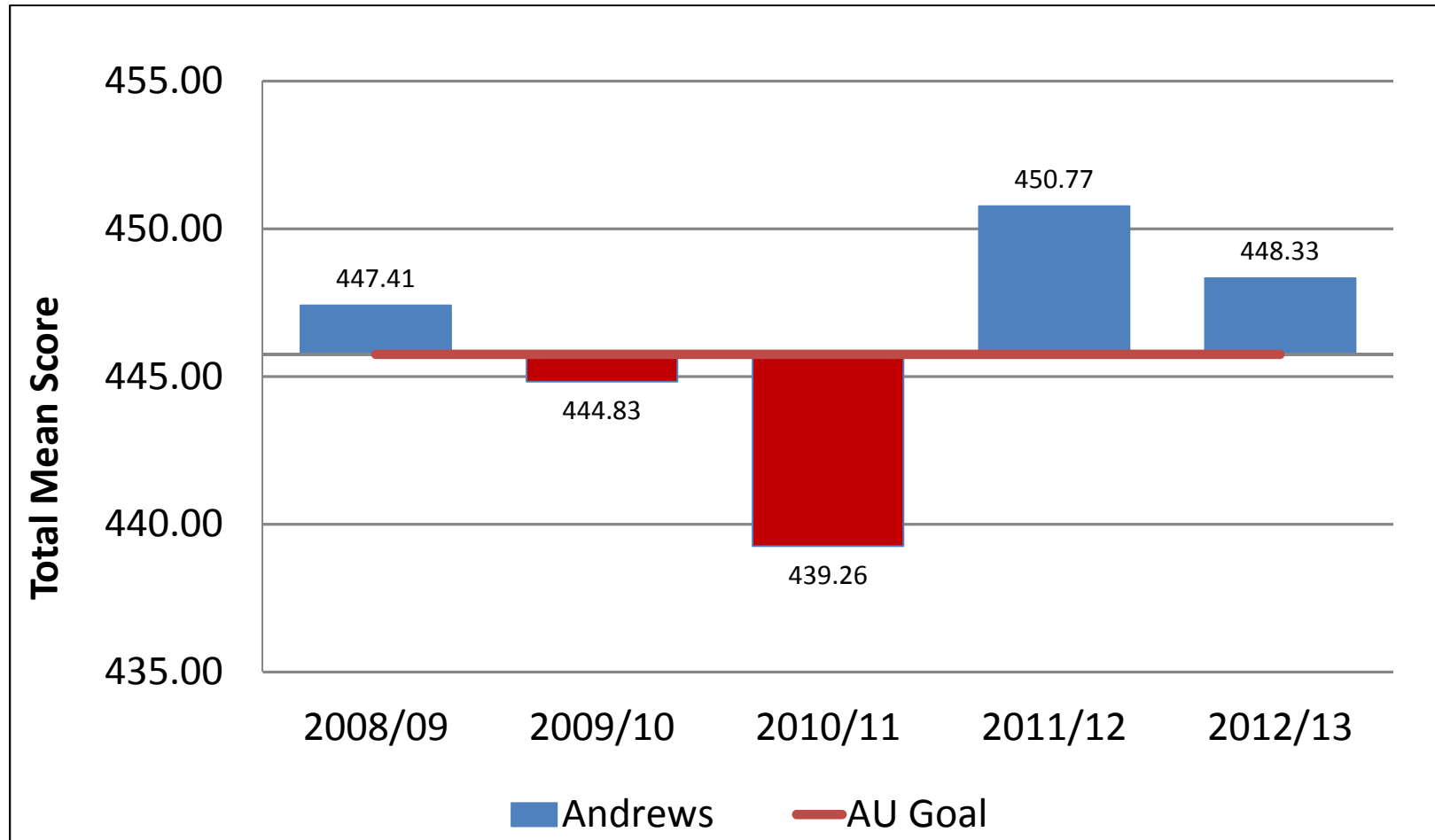
# **Snapshot on Andrews, 2013 Assessment of Key Performance Indicators**

Office of Institutional Effectiveness  
October 2013



# **MEASURES OF QUALITY**

# Senior Results on ETS Proficiency Profile



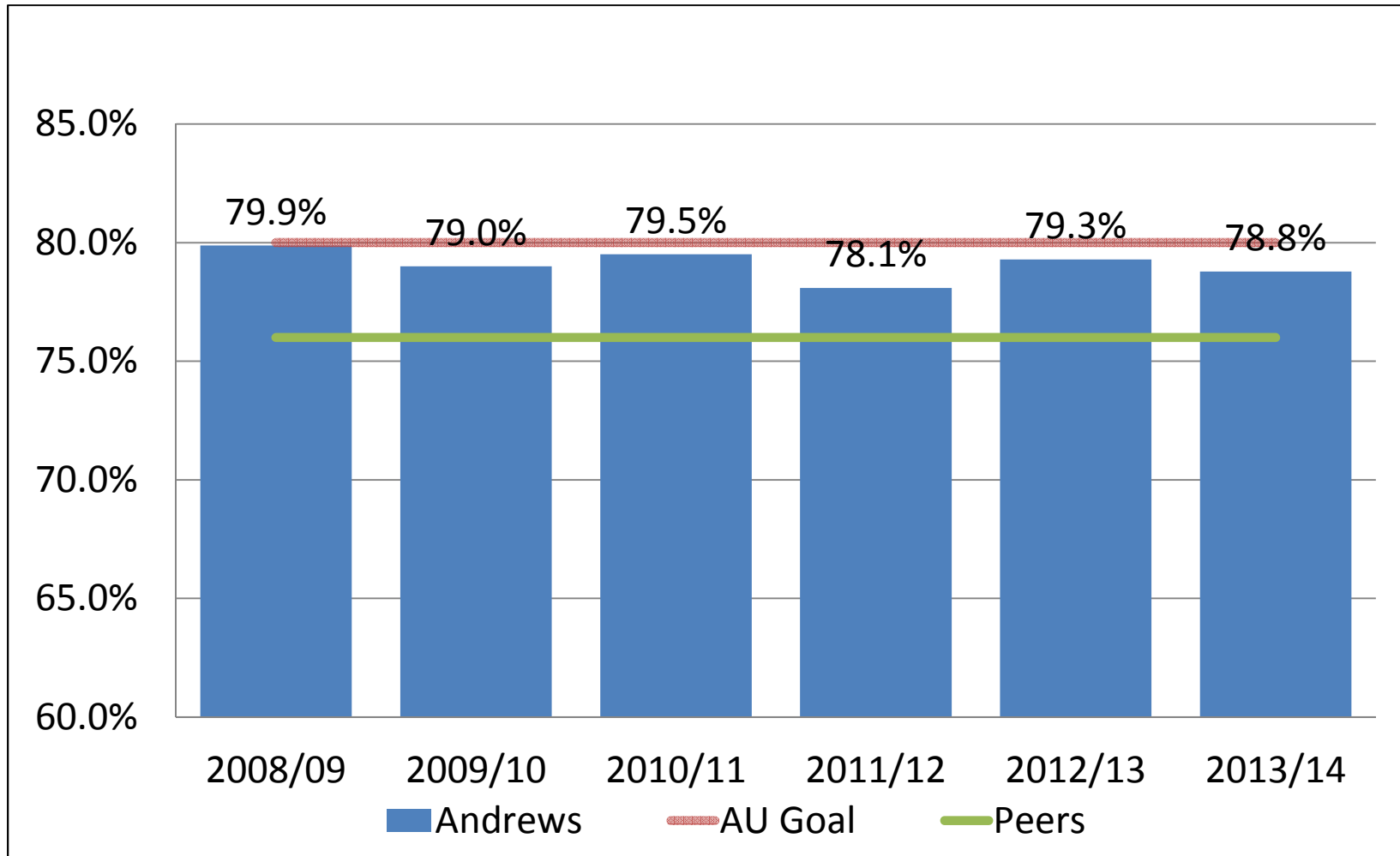
# Licensure Pass Rates, Cumulative, Goal = 80%

Program	Years	Pass Rate
Dietetics, didactic program	2009-12	78%
Dietetics, Internship	2009-13	91%
Medical Lab Science	2012 cohort	91%
Nursing	2011, 2012 cohorts	95%
Physical Therapy	2008-12	99%

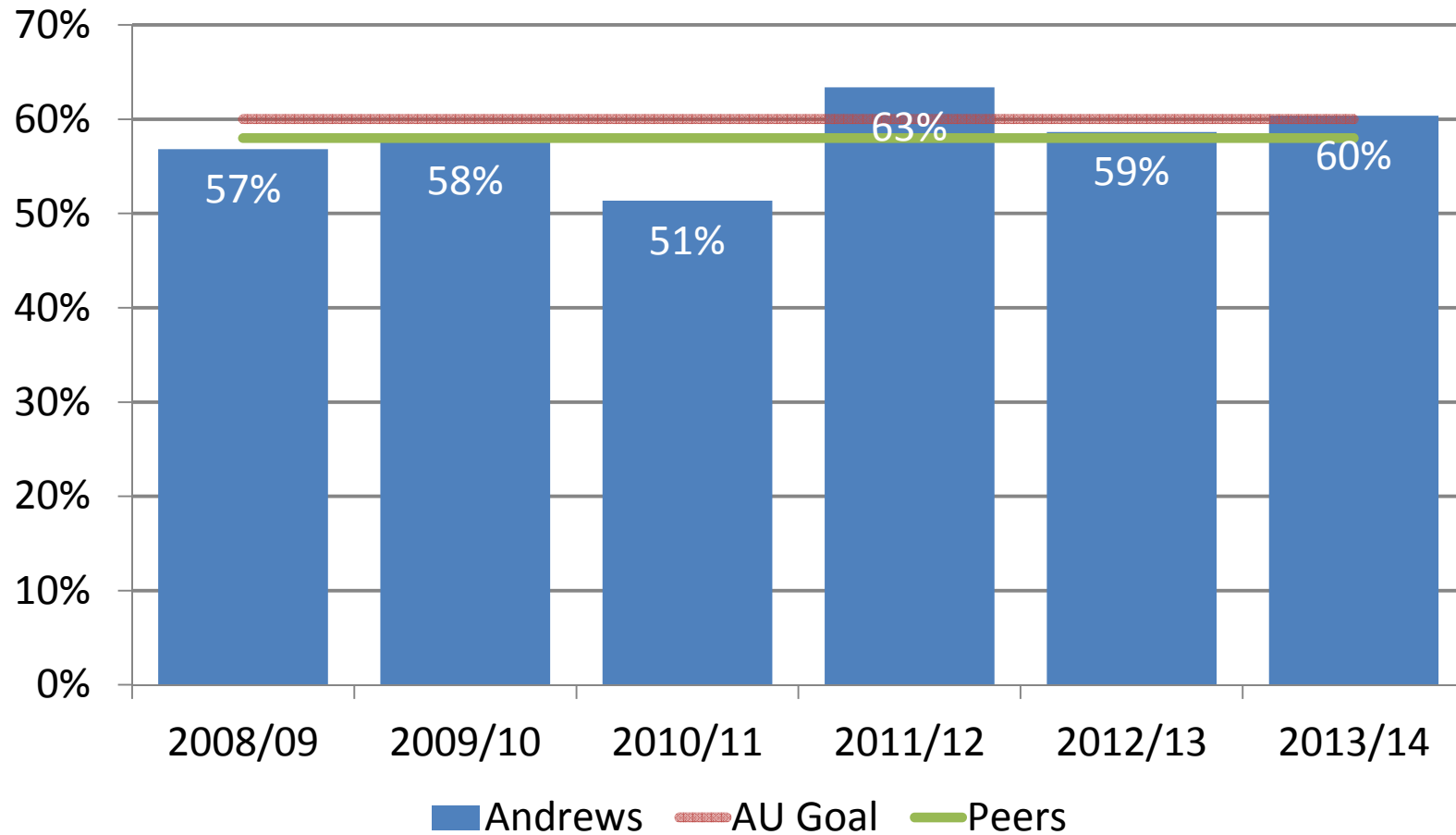
Program	Years	Pass Rate
Teacher Education	2009-12	90%
School Psychology	2012-13	100%
Clinical Mental Health Counseling	2011-12	100%
Social Work, BSW*	2009-13	100%
Social Work, MSW*	2009-13	100%
Overall:		94%

\*From survey of alumni

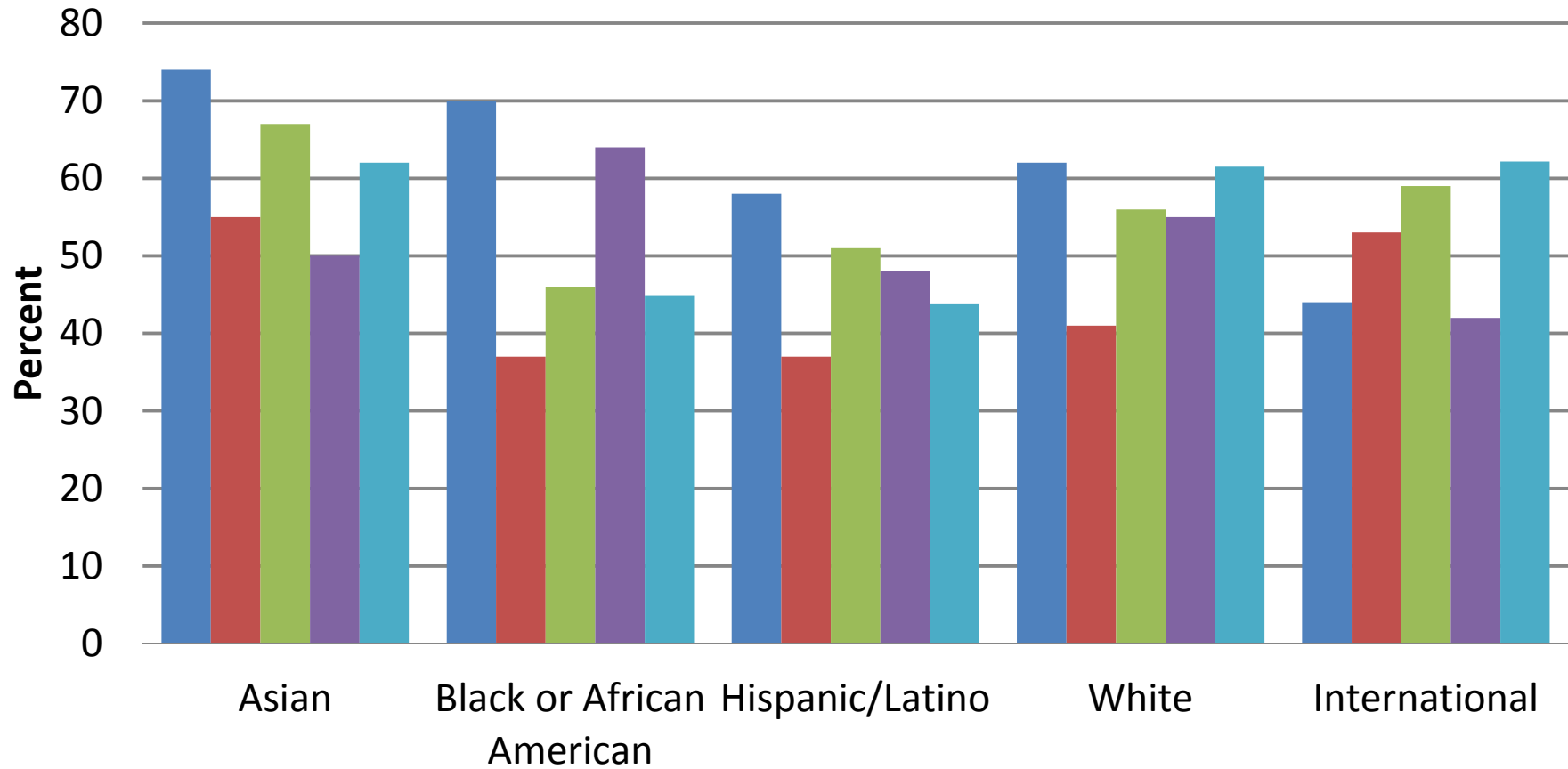
# First to Second Year Retention



# 6-yr Undergraduate Completion Rate



# 6-yr Graduation Rate by Ethnicity, 2005 Cohort



■ Andrews University

■ La Sierra University

■ Southern Adventist University

■ Walla Walla University

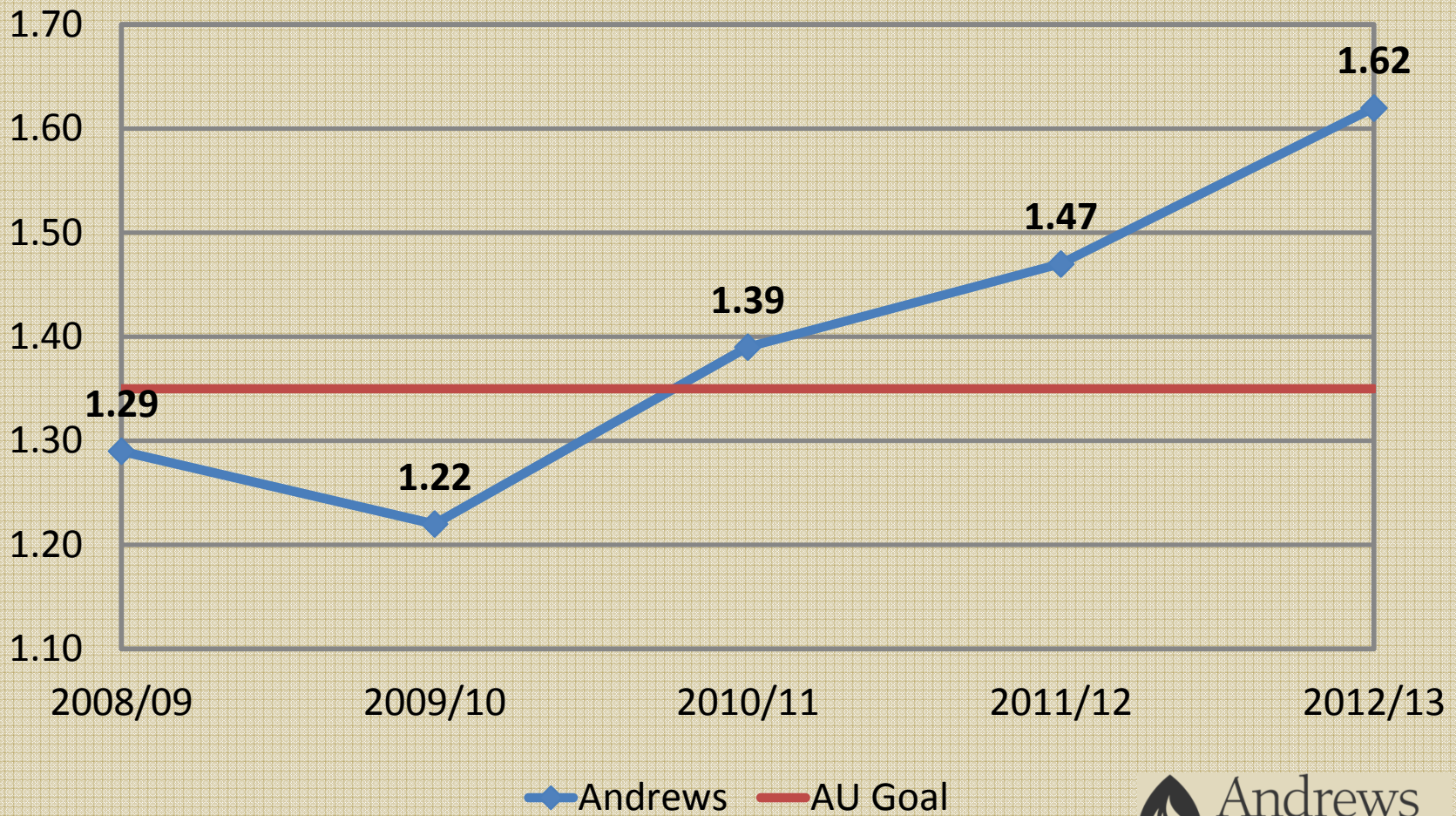
■ Peer Group Average



# Graduate Placement

- 57% of 2012-2013 MDiv graduates and 76% of other Seminary graduates had a job at graduation
- 39% of all other graduates had a job at graduation (May & August, 2013)
- 45% of all other graduates reported enrollment in graduate studies (May & August, 2013)

# Research Score per Full-time Faculty

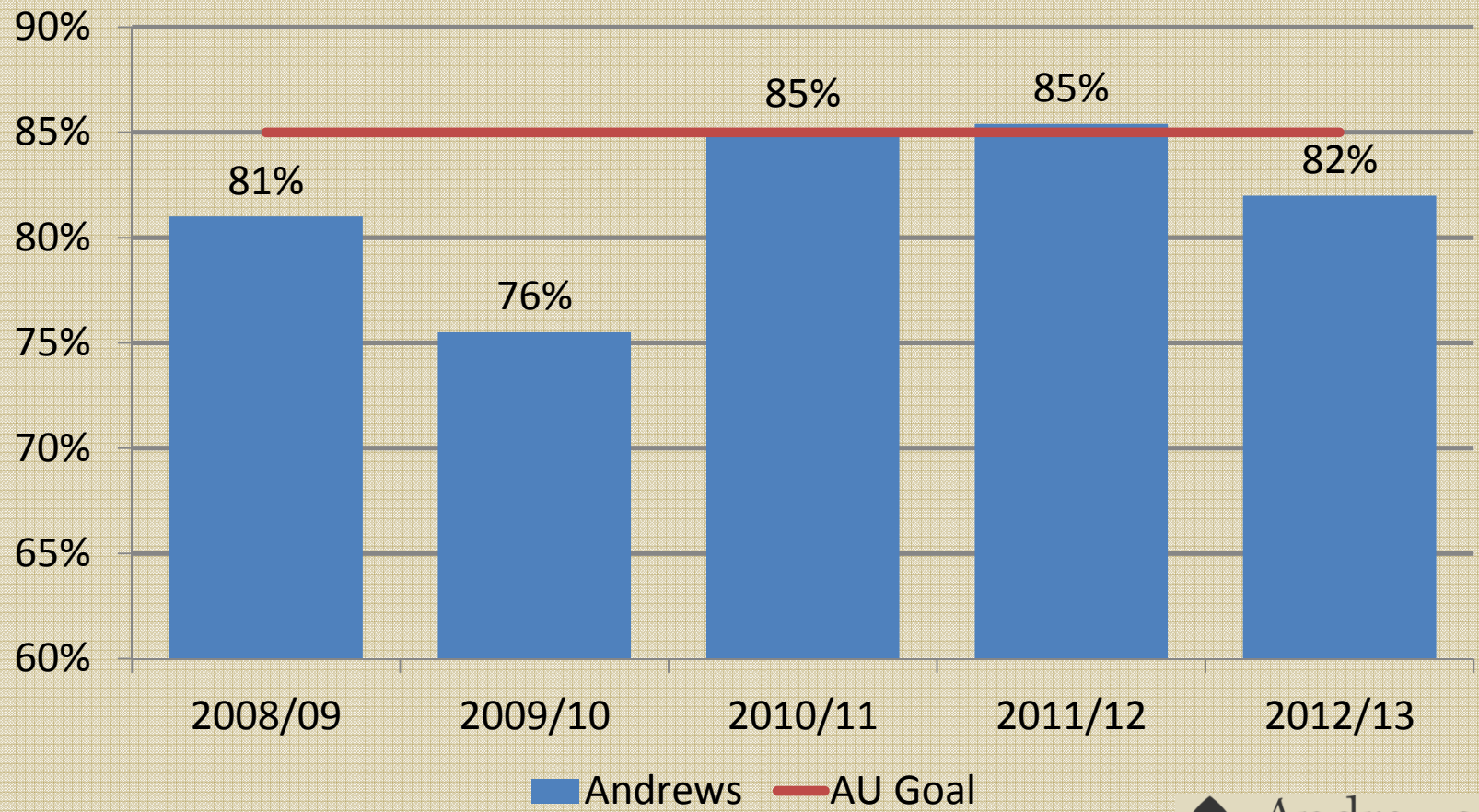




# **FAITH COMMITMENT**

# Average Scores on Faith Questions

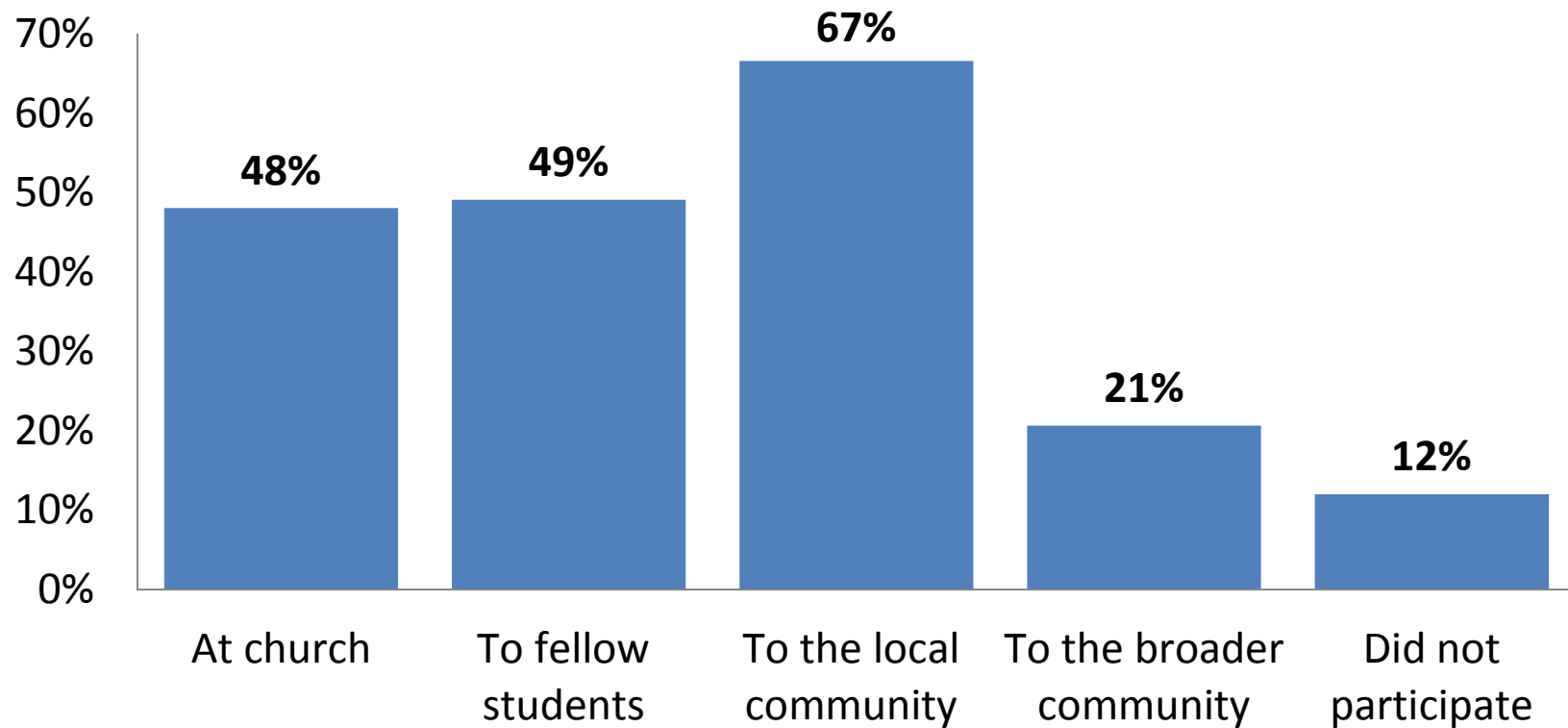
## Senior Survey 2012-2013





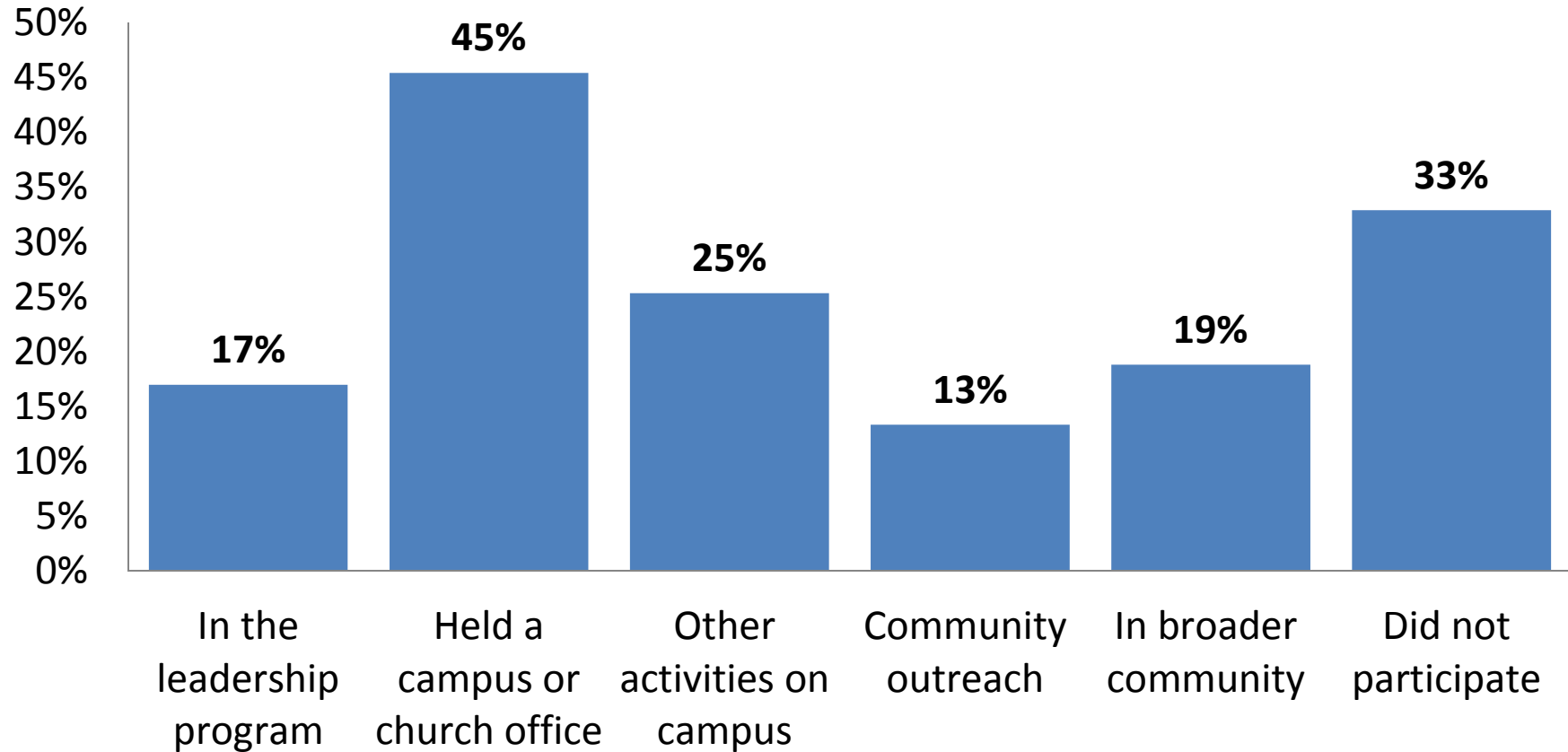
# **SERVICE & LEADERSHIP**

# Service Activities, Senior Survey 2012-13, n=377



- 75% of seniors were involved at least yearly (goal=80%)

# Leadership Activities, Senior Survey 2012-13



- 42% of seniors participated in leadership activities at least yearly



Andrews  
University  
Seek. Affirm. Change.

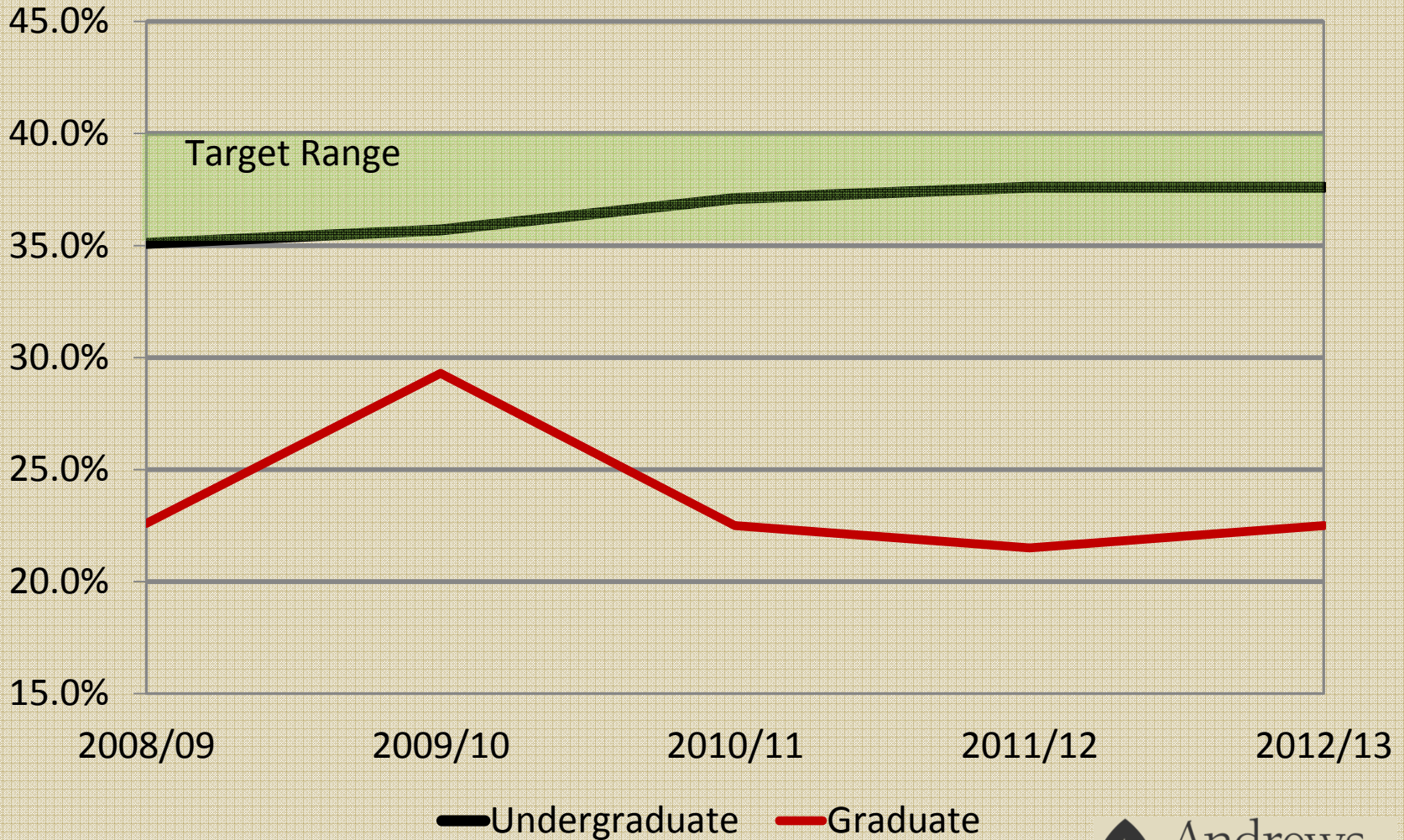
**COMMUNITY**



# Health & Wellness

- 90% of seniors are committed to living a lifestyle that promotes health (Senior Survey, 2013, goal = 75%)

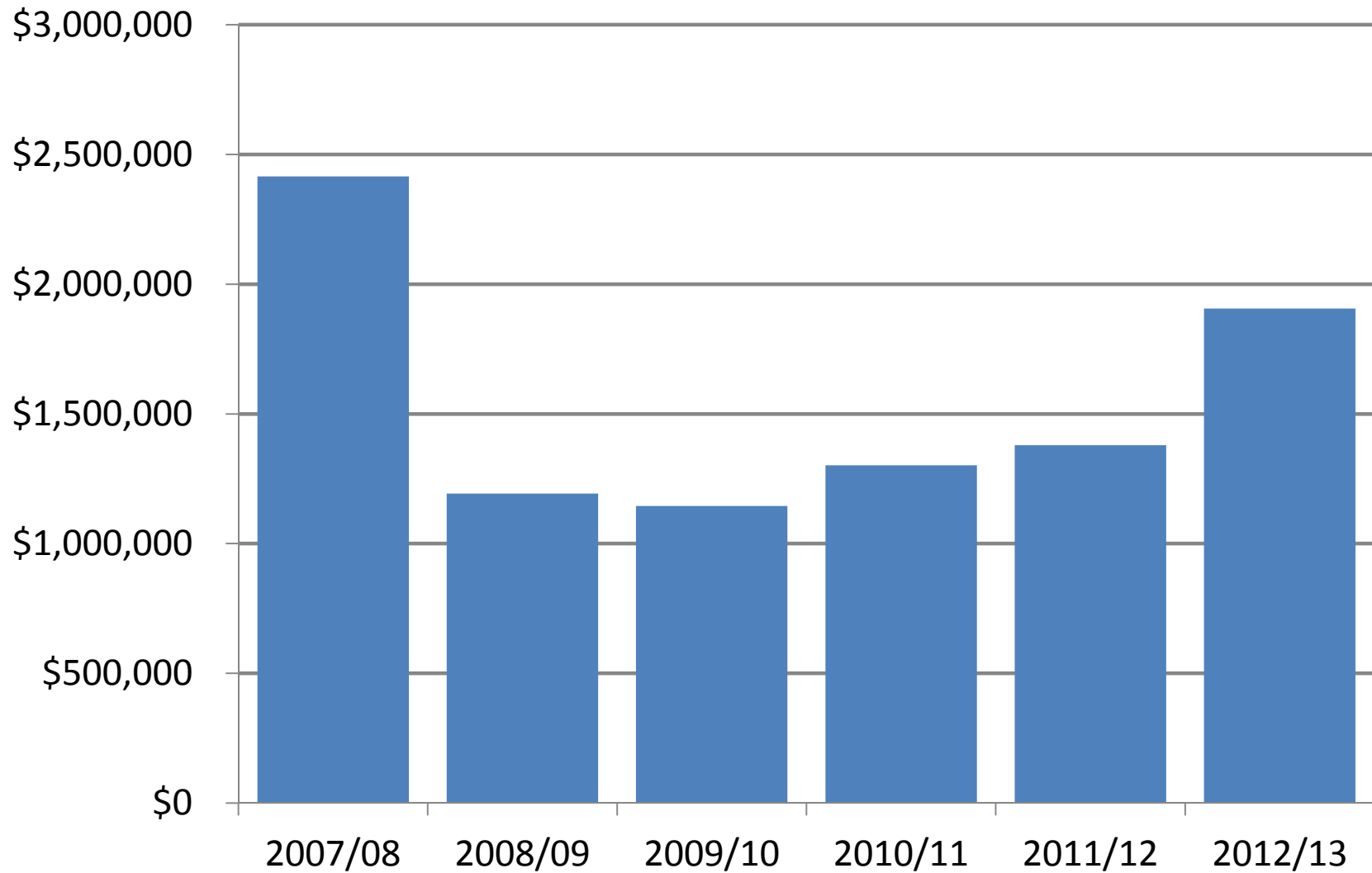
# Average Tuition Discounts



# Salaries as Percent of Market Median



# Annual Alumni Giving

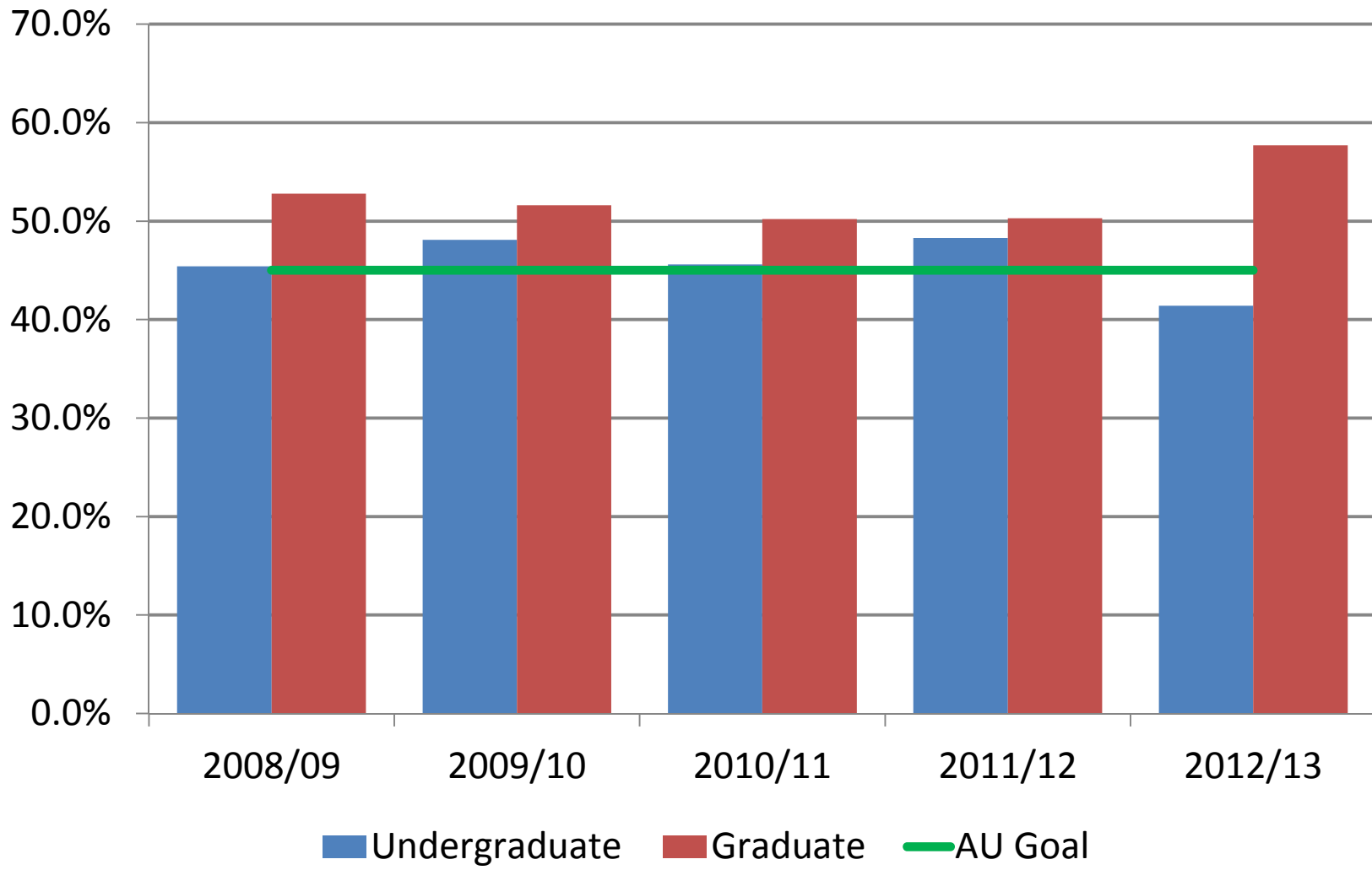




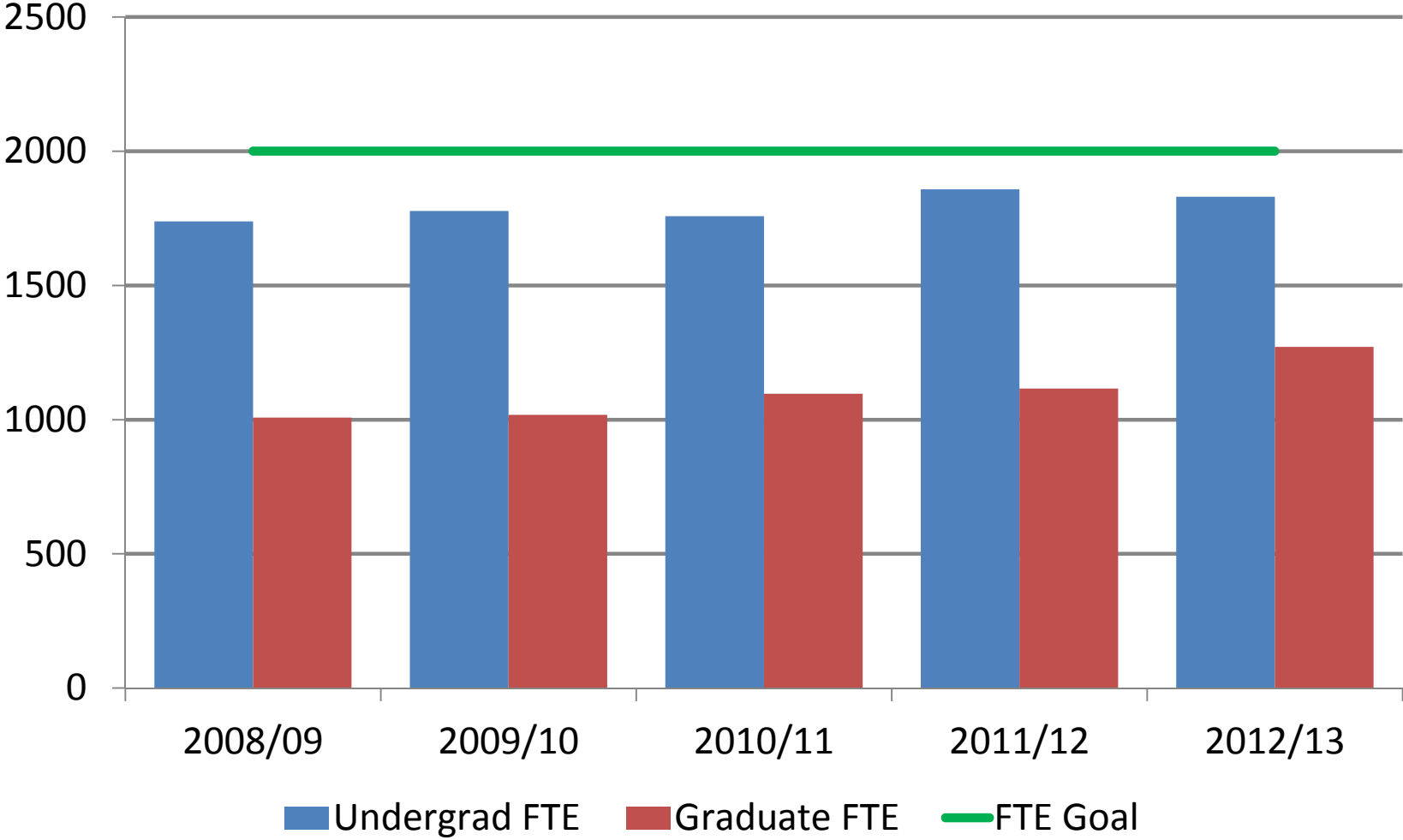
Andrews  
University  
Seek. Affirm. Change.

**GROWTH**

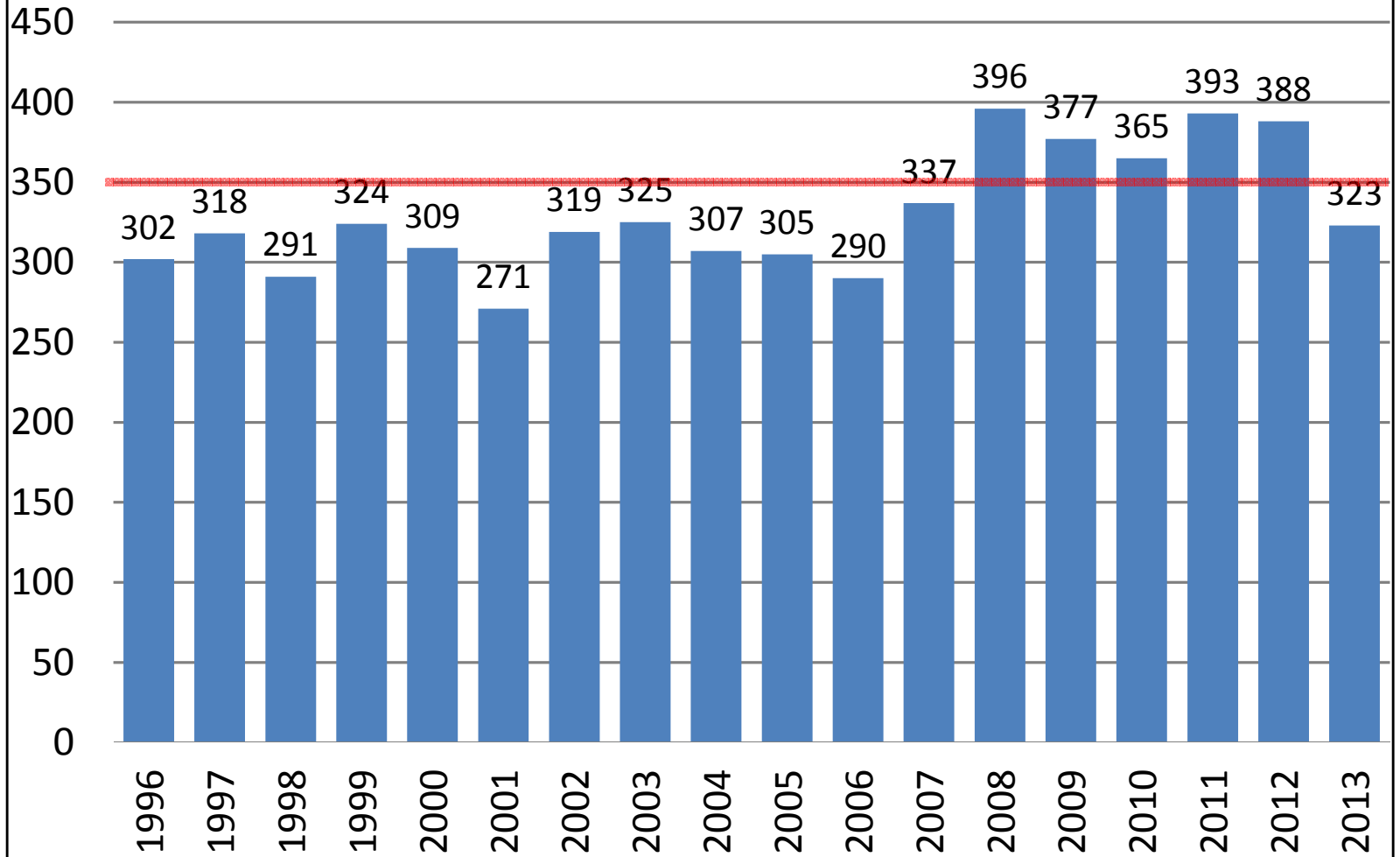
# Admission to Enrollment Yield



# On Campus Enrollment: 12-Month FTE's



# Total FTIAC: 1996-2013





# Off-Campus Headcounts 2012-13

Andrews		Griggs	
US Extensions	293	Griggs International Academy	1,562
Out-of-US programs	1,762	Griggs University	794
Total	2,055	Total	2,356

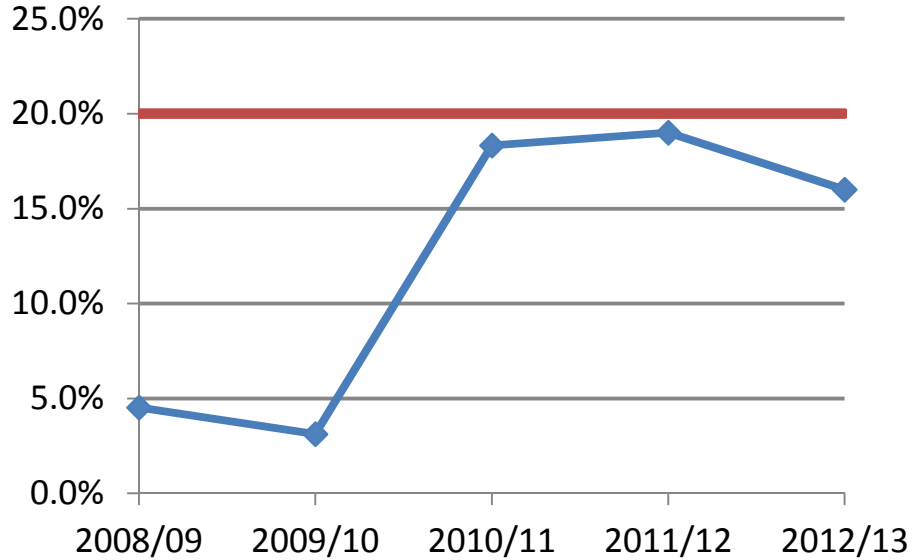
# Off-Campus Degrees Conferred 2012-13

Andrews		Griggs	
Undergraduate	506	Undergraduate	132
Graduate	97	Graduate	697
Total	603	Total	829

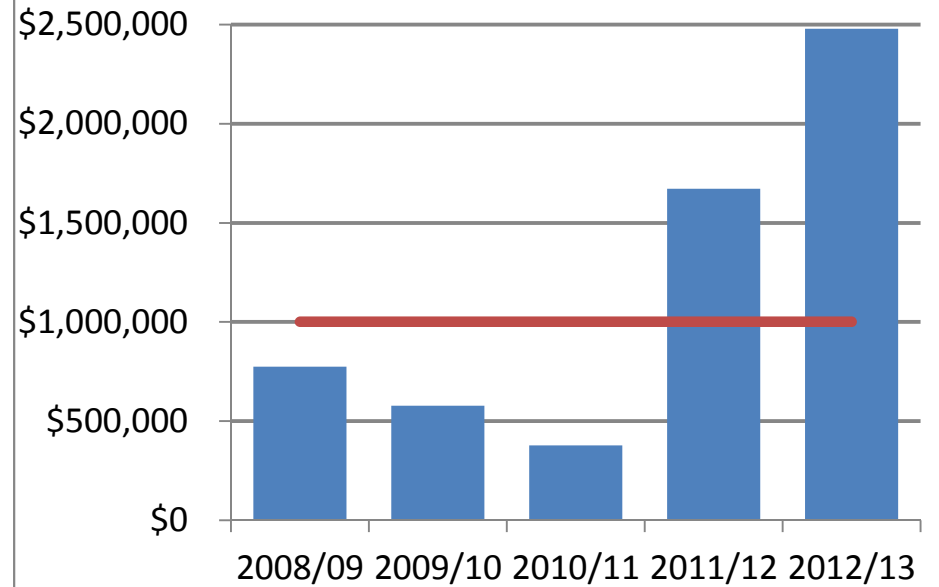


# **FINANCIAL RESILIENCE**

### Long-term Debt to Net Assets

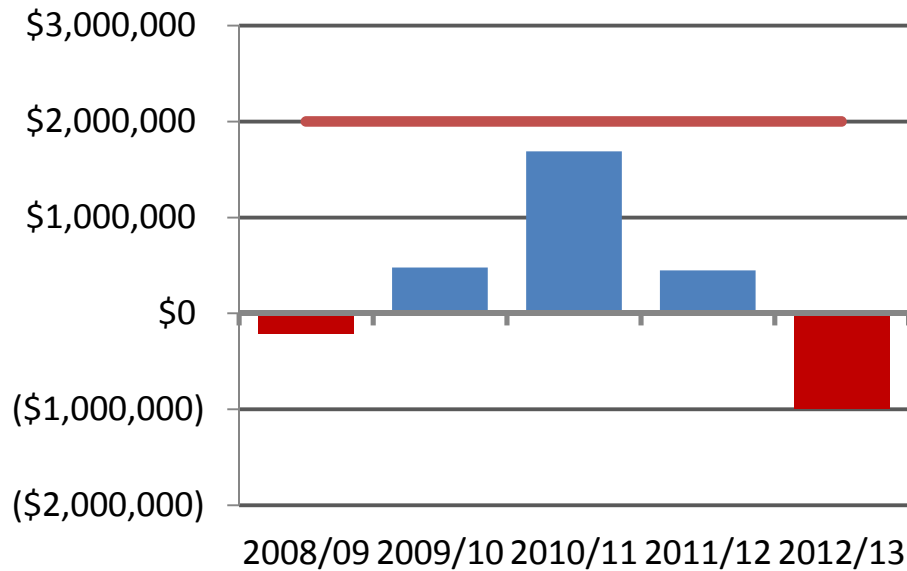


### Annual Debt Reduction

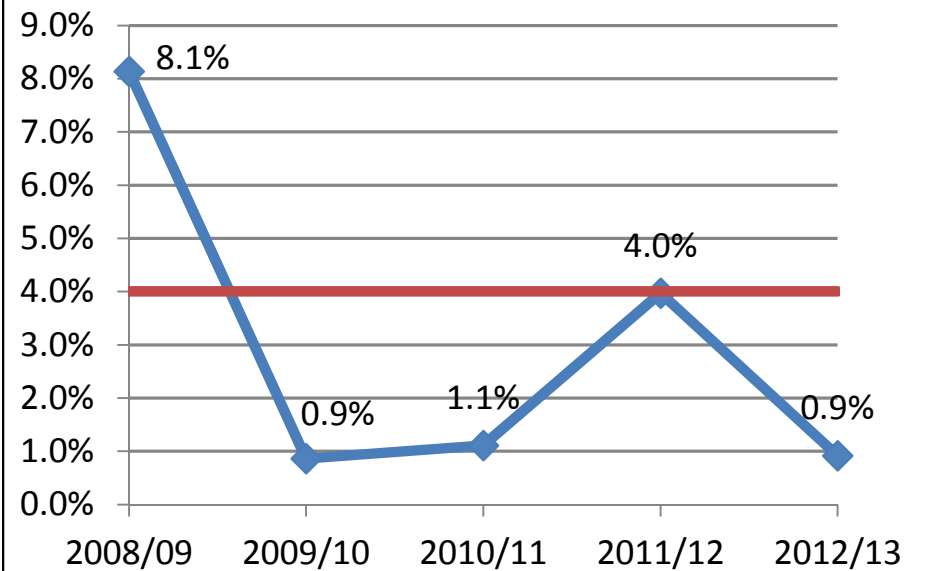


Goal lines: 

### Cash Increase



### Percent Gain on Operating





# **2013-14 FOCUS INITIATIVES**

# Six Comprehensive Strategies

- Response to enrollment changes and higher education environment
- Faculty support and policy issues
- Continued focus on process improvement
- Global identity
- Online opportunities
- Relationship with high school students

# Andrews University

Seek Knowledge. Affirm Faith. Change the World.